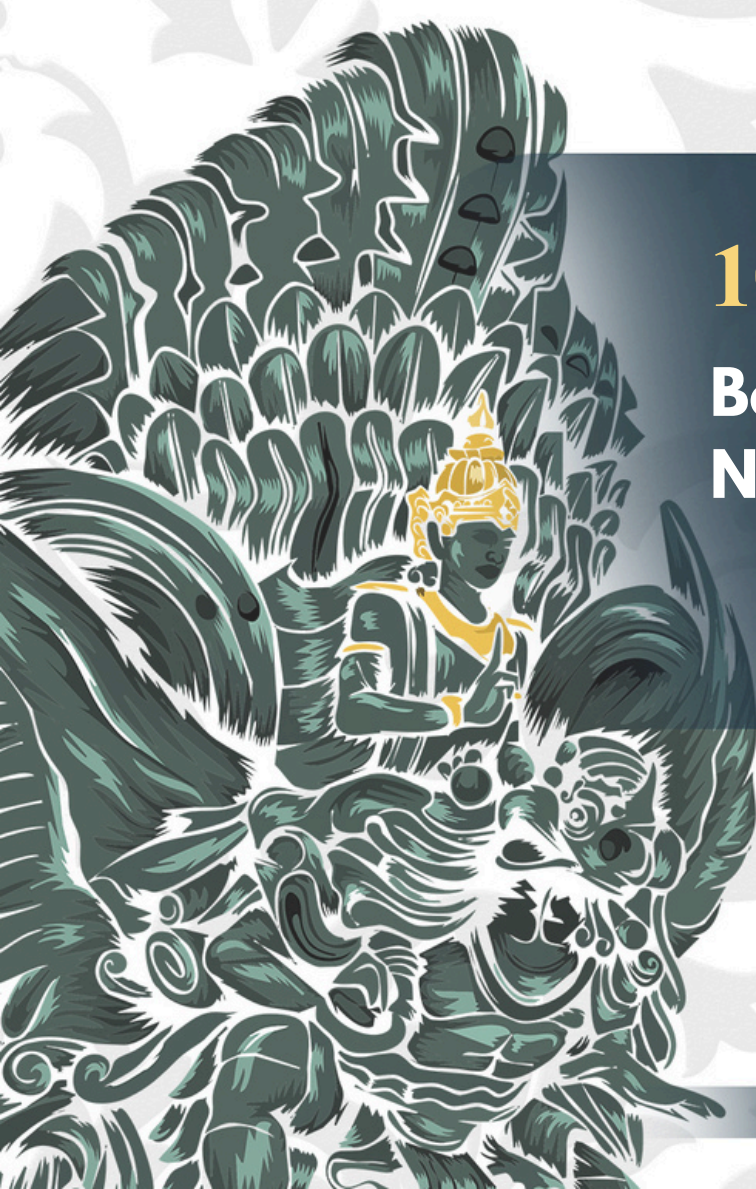




**8th Congress of Asian Pacific Society of
Dialysis Access (APSDA)
in Conjunction with
Indonesian Society of Nephrology Annual
Scientific Meeting (PIT PERNEFRI)**



10th - 12th , October 2024

**Bali International Convention Centre,
Nusa Dua, Bali, Indonesia**

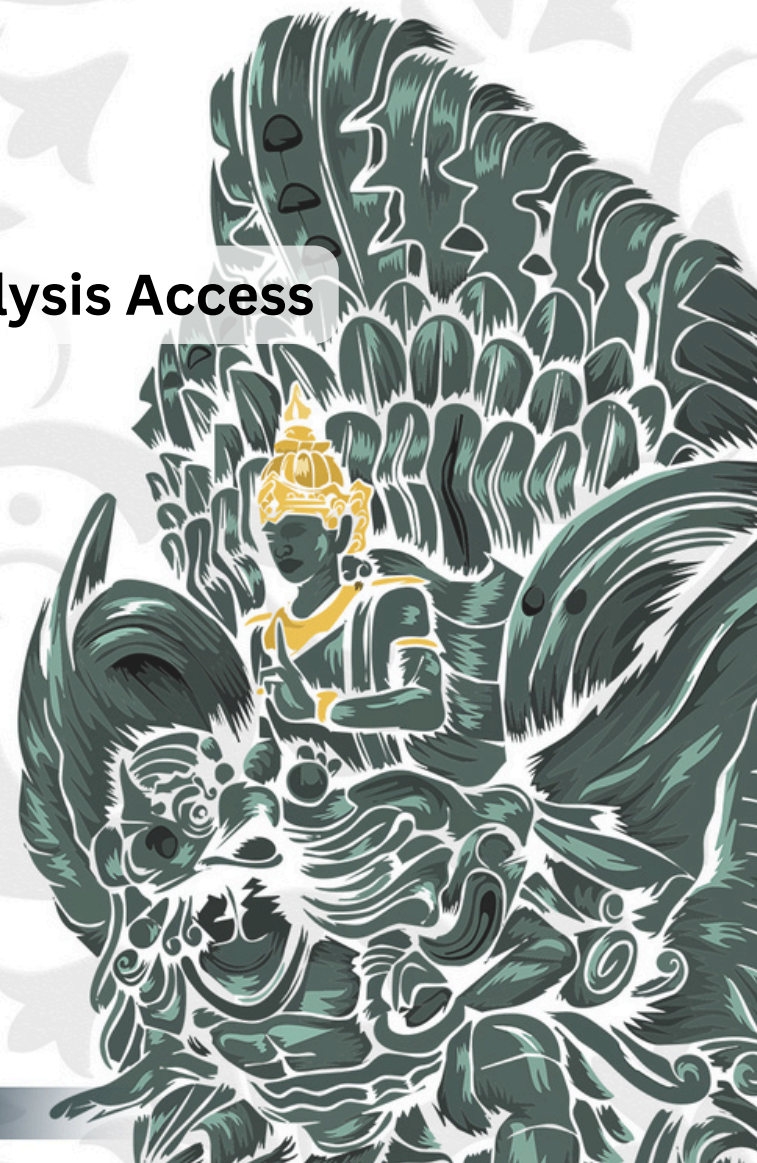
www.apsda-pernefri2024.com



WORKSHOP APSDA (HANDS-ON)

10th, October 2024

- 1. Tunneled Catheter Double Lumen Insertion**
- 2. Temporary Catheter Double Lumen Insertion**
- 3. Peritoneal Dialysis Catheter Insertion**
- 4. Renal Biopsy**
- 5. Angioplasty of Dialysis Access**
- 6. Ultrasound of the Kidneys and Vascular Dialysis Access**



PLENARY AND SYMPOSIUM APSDA TOPICS

11th 12th, October 2024

- 1. Ethical challenges in Nephrology Intervention**
- 2. Biomarkers in Acute Kidney Injury: The Dawning of a New Era?**
- 3. Peritoneal Dialysis (PD) Catheter Access and Utility
of Ultrasonography**
- 4. Arteriovenous fistula (AVF) in Dialysis, Preparation and Efficacy**
- 5. Hemodialysis (HD) Access, Site and Special Condition**
- 6. Arteriovenous fistula, Perioperative and Maturation**
- 7. Complication of Arteriovenous fistula (AVF), What We Can Do**
- 8. Peritoneal Dialysis (PD) Catheter Insertion, All We Need to Know**
- 9. Hemoadsorption: Past, Present and Future**
- 10. Expert Meeting, Sharing and Discussion All About Dialysis Access**

WORKSHOP PIT PERNEFRI TOPICS

10th, October 2024

1. Comprehensive Approach of Advanced Dialysis (Focus on HDF)
2. Heading Into a New Era of Anemia Management in Chronic Kidney Disease
3. A Comprehensive Practical Aspect of Kidney Transplant
4. Update in Hypertension: New Guideline, Target and Trial
5. CAPD as an Options for Acute Kidney Injury Management
6. Current and Clinical Approach of Glomerulonephritis
7. Chronic Kidney Disease; Early Detection and Management
8. How to Conduct Systematic Review and Meta-Analysis

PLENARY AND SYMPOSIUM PIT PERNEFRI TOPICS

11th 12th, October 2024

- 1. Dialysis Access, What Can We Learn from Asia Pacific?**
- 2. Biomarkers in acute kidney injury: The dawning of a new era?**
- 3. Super High-Flux dialyzer for better outcome**
- 4. Core Concept and Update on Acute Kidney Injury**
- 5. Transforming Kidney Health and The Burden of CKD**
- 6. Evolving Strategies in Nutritional Management of CKD**
- 7. Blood Pressure Management on CKD**
- 8. Glomerulonephritis, the New Insight**
- 9. A-Z Management of CKD: From Delay the Progression
until Supportive Therapy**



PLENARY AND SYMPOSIUM PIT PERNEFRI TOPICS

11th 12th October 2024

10. Trajectory the Future Management of CKD Targeting SGLT2 Receptor
11. Effectiveness and Long-Term Benefits of Empaglifozin Use
12. Managing Anemia in Pre-dialysis Patients
13. Hemodiafiltration, Practical Consideration and Study
14. A New Hope for ADPKD Patients
15. Hemoadsorption: Past, Present and Future
16. Mineral and Bone Disorders in Chronic Kidney Disease
17. Is GLP-1 RA Semaglutide Once-Weekly the New Kid on the Block?
18. Nefrology Oncology Best Practice
19. Extending the Availability of PD Methods and Initiating The procedure in Patients with Sufficient Residual Kidney Function

REGISTRATION

PIT PERNEFRI

		WORKSHOPS PERPACK (2WS)	SYMPOSIUMS
SPECIALIST DOCTOR	EARLY-BIRD	IDR 4.000.000	IDR 5.000.000
	NORMAL RATE	IDR 4.750.000	IDR 6.000.000
		WORKSHOPS PERPACK (2WS)	SYMPOSIUMS
GENERAL PRACTITIONERS	EARLY-BIRD	IDR 1.500.000	IDR 4.000.000
	NORMAL RATE	IDR 2.000.000	IDR 4.500.000
SPECIALIST DOCTOR			APSDA
			APSDA additional WS APSDA for PIT PERNEFRI participant add : IDR 6.000.000

EARLY- BIRD VALID UNTIL JULY 10TH 2024

REGISTRATION

APSDA

WORKSHOPS + SYMPOSIUMS

SPECIALIST
DOCTOR

EARLY-BIRD

IDR 12.000.000
USD 757.99
AUD 1150.17

NORMAL RATE

IDR 13.500.000
USD 852.74
AUD 1293.95

EARLY- BIRD *VALID UNTIL JULY 10TH 2024*

Payment:

BANK BNI Cabang Renon

No Rekening : 1341717455

Atas Nama : Perkumpulan Nefrologi Bali

ACOMODATION

DISTANCE	HOTEL NAME	RATE
Venue	Westin Resort Nusa Dua	IDR 2.900.000
1,6 KM	Grand Hyatt Nusa Dua	IDR 2.400.000
0.3 KM	Nusa Dua Beach Hotel & Spa	IDR 2.400.000
1.7 KM	Ayodya Resort Bali	IDR 1.800.000
1.8 KM	Holiday Inn Resort Bali Nusa Dua	IDR 2.200.000
3 KM	Nikko Bali Benoa	IDR 1.800.000
0.75 KM	Grand Whiz Hotel Nsa Dua	IDR 1.350.000
1.5 KM	Courtyad by Marriot Bali Nusa Dua Resort	IDR 2.400.000
2.2 KM	Novotel Bali Nusa Dua - Hotel & Residences	IDR 1.550.000
2.8 KM	Ikosharold Resort	IDR 900.000



VENUE :

BALI INTERNATIONAL CONVENTION CENTER (BICC)

Kawasan Pariwisata Nusa Dua, BTDC Lot N-3, Benoa, Kuta Selatan Benoa, South Kuta, Nusa Dua, Bali 80363

REGISTRATION

+62 858 -589-41945

(Lina)

+62 812-4652-8096

(Dami)

GENERAL INFORMATION

+62 813- 3711- 7108

(Pernefri Bali)

+62 812-9403-8179

(dr. Marciyasa, SpPD)

+62 813-8181-8923

(dr. Anantika Riani, SpPD)

 **pernefri_bali**

website :

www.apsda-pernefri2024.com

email :

Info@apsda-pernefri2024.com

